



Dr. M.G.R. UNIVERSITY

EDUCATIONAL AND RESEARCH INSTITUTE



★ University with Graded Autonomy Status ★



**2024 - 2025
SUSTAINABILITY REPORT**





SDG REPORT

2024-2025





VISION OF Dr. MGR ERI

To provide for contemporary knowledge delivery of global standards, excellence in knowledge creation in emerging areas and mutually rewarding university - societal interaction.

MISSION OF Dr. MGR ERI

- Our Mission is to make the Institution as a Resource Centre for Higher Level Teaching - Learning Process, in the fields of Engineering, Dental Surgery, Medicine, Allied Health Sciences, Humanities & Sciences, Architecture, and Management & Education.
- We wish to impart relevant training and education to the youth to make them technically qualified, practically competent and skilled human resources, to suit the needs and demands of the modern industries, business or research and development organizations.
- We also wish to promote ethical values and encourage creative ideas among the younger generation and thereby to develop their entrepreneurial skills which will ultimately benefit the Society and Nation.





IMPORTANCE OF SUSTAINABLE DEVELOPMENT GOALS



The Sustainable Development Goals (SDGs) aim to transform our world. They are a call to action to end poverty and inequality, protect the planet, and ensure that all people enjoy health, justice and prosperity. It is critical that no one is left behind.

The Sustainable Development Goals (SDGs) are important because they are a call to action to address some of the world's most pressing challenges, including:

- **Poverty and inequality:** The SDGs aim to end poverty and inequality everywhere
- **Protecting the planet:** The SDGs seek to protect the planet and address climate change and environmental degradation
- **Health, justice, and prosperity:** The SDGs aim to ensure that all people have access to health, justice, and prosperity
- **Leaving no one behind:** The SDGs are designed to ensure that no one is left behind
- **Combating violent conflict:** The SDGs aim to tackle the causes of violent conflict
- **Human rights abuses:** The SDGs aim to address human rights abuses
- **Sustainable development:** The SDGs integrate economic growth, social well-being, and environmental protection

Courtesy: <https://www.who.int/europe/about-us/our-work/sustainable-development-goals>



ABOUT US

With over 35 years of ground-breaking expertise, Dr. MGR Educational and Research Institute is a multifaceted, globally recognized Private University (with Special Graded Autonomy Status), which has kept focus on Interdisciplinary Science Research and Holistic development of the 25000+ student community through a well trained cluster of 2500+ faculty members facilitating high end teaching learning process through technology driven ICT enabled learning environment.

Accredited with an A+ by NAAC, the University is offering more than 140 UG, PG and PhD programmes under fourteen different faculty including Medical, Dental Surgery, Engineering, Humanities and Science, Arts and Commerce, Law, Allied Health Sciences, Physiotherapy, Pharmacy, Nursing, Education, Management Studies, Computer Applications Hotel Management and Centre for Online Programs. The University has the best in class infrastructure spread across 07 campuses with an outstanding land area of 300+ acres and 100+ Lakh square feet built up architecture for teaching, learning and research deliberations. The University has its wings spread across the states of Tamilnadu (Chennai, Adyalampattu, Velanchavadi, Arni) and Bengaluru.

The University has a very vibrant motto **“Our students are to be Job Creators”** which resonates on building a society with improved standard of living, drives economic growth, creates job opportunities widely and ensures community development and social change through innovation and technology. To facilitate the spirit of Innovation and Entrepreneurship, the University has collaborated with over 200+ eminent National and International Organizations through actionable MOUs and joint ventures.

The Founder Chancellor, Dr. A. C. Shanmugam is a world renowned Philanthropist has received an honorary Fellow of Royal College of Physicians and Surgeons (FRCPS) doctorate from the Royal College of Physicians and Surgeons in Glasgow, has been a visionary leader, promisingly offering affordable quality education to all which is closely knitted to the Sustainable Development Goal on Quality Education. Carrying forward the light of knowledge is our dynamic President Er. ACS Arunkumar, who has an unwavering vision to empower the society through Outcome Based Education coupled with Innovation and Research. We have now expanded to Arni as off campus, Thiruvanamalai district, approved by the Ministry of Education (MoE) Govt. of India in the academic year 2024-25 and by AICTE, New Delhi for the academic year 2025-26.



IMPACT OF Dr. MGR ERI ON SUSTAINABLE DEVELOPMENT GOALS

Dr. MGR Educational and Research Institute is a pioneer in the field of Quality Education for all which forms the SDG 4. The University had its humble beginning in the year 1985 as a Polytechnic Institution and aiming to bring about change and progress through education, ambitiously has grown into a multi-faceted University in the year 2003 mapping all the Sustainable Development Goals spread across all the fourteen different faculties under its empowered wings of wisdom. The University is recognized in the 1001+ band in the International arena by Times Higher Education for Sustainable Impact, 600+ band in quality education and good health and well being, 400+ for clean water and sanitation in 2025.

In Dr. MGR Educational and Research Institute, we are not only committed to nurture our stakeholders through Quality Education but also enable them to be a part of the broader society, contributing towards its up-liftment by applying their knowledge and skills in line with the University's vision. A rich curriculum coupled with high-quality teaching is the backbone of the robust academic program being offered at Dr. MGR ERI. The curriculum and the syllabi are designed to achieve academic excellence and professional competency to find solutions to the local, national, regional, and global health care needs and Industry integration and Internationalization.

The University has a very strong connect with the local community through various Healthcare programmes, Energy and Water Conservation Programmes, Entrepreneurship initiatives through the Dr. APJ Abdul Kalam Centre for Innovation and Entrepreneurship. Farmers in the local villages are supported through the R and D initiatives like agricultural drones for better harvest, food safety and healthy eating and mental health awareness. Not only that, the Faculty of Education is committed to foster education to all through various outreach events. On the whole, significant impact is created towards the various SDGs and visible outcomes are achieved.

The University has a dedicated Sustainable Development Centre (MGR-SDC) which is the University's central body dedicated to putting the United Nations' Sustainable Development Goals into practice. It does this by educating the university community, conducting related research, and working with outside groups to build a more sustainable future. It guides the University's effort to achieve the UNs Sustainable Development Goals. It educates the stakeholders about the SDGs. It conducts research work with the community to address issues



like poverty, gender equity, decent work and economic growth, climate change and sustainability and ensures the university's operations align with the 17 UN SDGs, which cover a wide range of social, economic, and environmental issues. Under the central SDG hub, the International Coordination Unit is established which has taken specific initiatives like "SDG4MGR" and the "UNSDG Ambassadors" program and pursuing international collaborations, particularly through the United Nations Academic Impact (UNAI) initiative.

Research is one of the measures to embark on the progress of the University towards Sustainable development. In other words, research serves as the foundational, evidence-based engine for achieving sustainable development by creating innovative solutions, guiding effective policies, and addressing urgent global crises. By advancing scientific knowledge, it moves humanity beyond outdated practices that harm the planet and provides a roadmap for building a more resilient, equitable, and prosperous future. The metrics are represented in the below table:

Goal	Description	Number of Scopus papers
SDG 1	No Poverty	51
SDG 2	Zero Hunger	343
SDG 3	Good Health and Well Being	1171
SDG 4	Quality Education	159
SDG 5	Gender Equity	122
SDG 6	Clean water and sanitation	113
SDG 7	Affordable and Clean Energy	344
SDG 8	Decent work and Economic Growth	61
SDG 9	Industry, Innovation and Infrastructure	199
SDG 10	Reduced Inequalities	76
SDG 11	Sustainable Cities and Communities	95
SDG 12	Responsible consumption and production	38
SDG 13	Climate Action	29
SDG 14	Life below water	94
SDG 15	Life on land	56
SDG 16	Peace, Justice and Strong Institutions	96
SDG 17	Partnership for the goals	41



SDG 1

NO

POVERTY



**1 NO
POVERTY**



The Dr. MGR Educational and Research Institute has hosted the ACS Mega Job Fair in Ambur, Gudiyatham, Vaniyambadi, Vellore, Anaicut and KV Kuppam as a part of its Institutional Social Responsibility (ISR). This initiative aims to help people in semi-urban and rural areas find jobs by connecting them with employers and providing skills training, thus improving their livelihoods and empowering local communities. The fair served as a meeting point for potential employees and employers, significantly lowering the cost and effort of job searches. It gives job seekers from diverse backgrounds access to companies and a chance for face-to-face interaction, which can lead to better job matches. The Job fairs enabled participants to build a professional network and receive counseling on career goals and job search strategies. They can also help shape attendees' perceptions of the job market and its opportunities. By creating pathways to formal employment, the fair helps reduce unemployment and promote stable livelihoods, leading to economic growth within the local area. This also combats the "brain drain" by retaining local talent.

The Mega Job Fair was organized to serve job seekers from Ambur, Gudiyatham, Vaniyambadi, Vellore, Anaicut and KV Kuppam and surrounding regions, including both young graduates and skilled workers seeking formal employment opportunities. Approximately 4291 families directly benefited from the initiative, either through job placements, interview experiences, or career counseling sessions. The fair provided a platform for direct interaction with reputed employers, enabling participants to explore diverse career pathways, understand industry expectations, and secure employment opportunities aligned with their skills. Additionally, the initiative included resume-building workshops, soft skills training, and guidance on interview preparation, thereby enhancing participants' readiness for the competitive job market.

Dr. A. C. Shanmugam and Er. A. C. S. Arun Kumar, the university's Founder/Chancellor and President, demonstrated their compassionate leadership by personally engaging with attendees at an event. They welcomed participants, interacted with employers, and gave gifts to those who attended. By doing so, they reinforced the university's focus on education, skill development, and social responsibility. Their involvement also served as an inspiration for



faculty, staff, and students, fostering a culture of mentorship and service throughout the university.

The ACS Mega Job Fair advances several UN Sustainable Development Goals (SDGs) by connecting job seekers with employers. The initiative can be rephrased as follows: The ACS Mega Job Fair is an impactful initiative that helps individuals find jobs and improve their skills, which is a direct contribution to achieving Sustainable Development Goal 8, which promotes productive and respectable work for everyone. Furthermore, by concentrating on under-resourced communities, the fair helped to alleviate poverty and close economic gaps, thereby supporting:

SDG 1: No Poverty

SDG 10: Reduced Inequalities

The fair also indirectly reinforces SDG 4: Quality Education, as it provides a path for attendees to use their educational backgrounds and training to find meaningful employment. Finally, by partnering with companies and local groups, the initiative sets an example for SDG 17: Partnerships for the Goals, demonstrating how educational institutions can collaborate with businesses and the community to drive sustainable economic growth.

S. No.	Date	Description	Number of Offer Letters issued	Beneficiary Families
1	10-02-2024	ACS Mega Job Fair - Ambur	642	4291 families
2	21-01-2024	ACS Mega Job Fair - Gudiyatham	869	
3	03-02-2024	ACS Mega Job Fair - Vaniyambadi	578	
4	18-02-2024	ACS Mega Job Fair - Vellore	988	
5	24-02-2024	ACS Mega Job Fair - Anaicut	721	
6	23-12-2023	ACS Mega Job Fair – KV Kuppam	493	

The ACS Mega Job Fair had a significant and wide-ranging effect, not just on the individuals who found jobs, but on their families and the broader community [0]. It improved household finances, promoted social mobility by enabling investments in education and health, and positioned Dr. MGR Educational and Research Institute as a valuable community partner. The job fair served as a clear example of Dr. MGR Educational and Research Institute's dedication to improving the community through sustainable employment

By providing access to employment, enhancing skills, and fostering economic growth, the University demonstrates how higher education institutions can serve as catalysts for meaningful social transformation. Through ongoing ISR activities, leadership engagement, and



structured community programs, the University continues to uphold its mission of “Education for Life and Community,” creating lasting socio- economic impact, promoting inclusive growth, and bridging the gap between education and employment opportunities for underserved populations.



Mega Job Fair 2024 for general public in Vellore district

EVIDENCE LINK

<https://www.youtube.com/watch?v=f6MMVmm39ho>

<https://www.facebook.com/ACSMPVELLORE/videos/acs-mega-job-fair-at-vaniyambadi/924936389189307/>

<https://www.facebook.com/groups/chennaijobsearch/posts/3622701634663455/>



SDG 2

ZERO

HUNGER



2 ZERO HUNGER



Dr. M.G.R. Educational and Research Institute is actively helping to fight hunger and food insecurity by distributing rice in several districts. This effort is a key part of the institution's commitment to social responsibility and its broader mission to improve the community beyond traditional academics. As part of its social mission, Dr. M.G.R. Educational and Research Institute provide basic nutrition to local communities through a rice distribution program. This is how the institute extends its impact beyond education to improve people's lives by giving out rice to families in need across Tiruvallur, Villupuram, Maduravoyal, Adayalampattu, and Kanyakumari districts. Through this rice distribution drive, we have supported the United Nations goal of achieving "Zero Hunger," in several districts to address food insecurity and ensure access to basic food for vulnerable families.

This Rice Distribution drive is not a one-time intervention but part of a series of regular ISR activities conducted by Dr. M.G.R. Educational and Research Institute. This continuity ensures that long-term support is extended to marginalized families, reducing the risks of chronic hunger and improving community resilience. By embedding such initiatives into its institutional culture, the Institute illustrates a holistic approach to education—one that seamlessly integrates academic excellence with compassion, social awareness, and community engagement. Outcomes of the Initiative were both immediate and long-lasting. In the short term, nearly 1000 families in and around the University locality received rice bags, directly alleviating food insecurity and ensuring meals for several weeks. This intervention reduced the immediate stress of hunger, promoted nutritional stability, and uplifted the morale of struggling households. On a broader scale, the initiative enhanced community trust in the Institute, strengthened relationships with local stakeholders, and demonstrated a replicable model of academic institutions addressing real social challenges. It also contributed to a deeper awareness among students, faculty, and volunteers about the importance of SDG-aligned community engagement, instilling values of empathy, service, and sustainability.



The Institute's commitment to social responsibility and sustainable development was demonstrated by the student-led Rice Distribution Drive. The initiative aligns with United Nations Sustainable Development Goals (SDGs), particularly SDG 2, which aims to achieve Zero Hunger. Beyond meeting immediate food needs, the drive promoted sustainability, solidarity, and community empowerment. By participating in community outreach, the institute and its student clubs strengthened their role as socially responsible educational bodies and set an example for integrating community engagement with SDG targets.



Rice bag distribution as an act of compassion



Rice bag distribution at Villupuram, Maduravoyal, Adayalampattu and Kanyakumari districts

EVIDENCE LINKS

<https://hospital.slmch.ac.in/event/rice-distribution-for-chairpersons-birthday/>

<https://www.facebook.com/slmchmgreri/posts/rice-bag-distribution-on-account-of-dr-mgr-remembrance-day-at-sri-lalithambigal-/583120531330987/>



SDG 3

GOOD HEALTH AND WELL BEING



3 GOOD HEALTH AND WELL-BEING



Dr. MGR Educational and Research Institute facilitates its health outreach programs through its three medical colleges: ACS Medical College and Hospital in Chennai, Sri Lalithambigai Medical College and Hospital in Chennai, and Rajarajeshwari Medical College and Hospital in Bengaluru. These colleges enable the university's Institutional Social Responsibility (ISR) framework by providing medical services to underserved communities, particularly those in rural and semi-urban areas. The medical colleges and their associated hospitals actively run outreach programs that provide a range of services:

- Preventive and curative services: Mobile units are staffed with doctors and pharmacists to offer free checkups, basic diagnostics, consultations, and medicines directly to villages and urban slums.
- Specialty services: Multi-specialty camps are conducted regularly, providing access to specialists in cardiology, gynecology, neurology, and more.
- Health education: Beyond immediate treatment, the camps focus on raising awareness about health and hygiene practices and offer counseling to empower individuals with knowledge for long-term well-being.
- Referral services: For patients requiring more advanced care, the college hospitals facilitate referrals, ensuring they receive the specialized treatment they need.

The university's Community engagement initiatives 2024, such as the Medical Camps, are examples of this continuous engagement, which aims to improve the health outcomes for economically disadvantaged populations in line with global development priorities.

The Medical Camp was organized to serve communities that often face barriers in accessing healthcare due to financial constraints, geographic isolation, or lack of awareness. Approximately 5000 families benefited directly from the camp, receiving a range of services including medical consultations, basic health check-ups, distribution of medicines, and guidance on preventive healthcare measures. By addressing immediate health concerns and offering guidance on long-term wellness, the initiative significantly contributed to reducing health risks,



promoting early detection of illnesses, and enhancing the quality of life for the beneficiaries. The camp also provided an opportunity to educate the community about nutrition, hygiene, and lifestyle practices, fostering healthier behaviors and empowering individuals to take charge of their well-being.

RRMCH, or RajaRajeswari Medical College and Hospital, has an active community outreach program that includes regular medical camps, particularly through its Department of Community Medicine. These camps are part of the hospital's efforts to provide preventive, promotive, and curative services to the local community in both rural and urban areas. The hospital has adopted over 25 villages and reaches out to more than 900 others through these and other community programs.

The medical initiative directly advances health and well-being (SDG 3) by providing accessible services. It also combats poverty (SDG 1) and inequality (SDG 10) by removing financial and social barriers to medical care. Furthermore, by improving nutrition and general health through education, it indirectly contributes to zero hunger (SDG 2). The program's collaborative nature, involving educational and community organizations, is a model of effective partnerships (SDG 17) for achieving global goals. The initiative provides accessible medical services, offering timely care and preventative measures to beneficiaries. Since economically disadvantaged families are reached out, the program lessens the financial strain of healthcare expenses, which is a major driver of poverty.



Free Medical Camp at Children's Home of Hope, Maduravoyal



Free Medical Camp at Koduvalli Village, Thiruvallur district

The impact of the Medical Camp extends beyond immediate health benefits. Beneficiaries received critical medical attention and guidance, reducing the financial and logistical burden of accessing healthcare. Economically, families were able to redirect limited resources to other essential needs such as education and household sustenance. Socially, the initiative fostered community cohesion, trust, and a sense of inclusion, as residents felt valued and supported. Many beneficiaries expressed profound gratitude for the initiative, highlighting that the camp not only addressed health needs but also provided reassurance, dignity, and hope for a healthier future. In conclusion, the Medical Camps 2024 exemplifies Dr. MGR Educational and Research Institute's commitment to holistic community development and social responsibility. By providing essential healthcare services, promoting preventive health awareness, and supporting vulnerable families, the University demonstrates how higher education institutions can serve as catalysts for meaningful social change.

EVIDENCE LINK
https://slmch.ac.in/2025/medical_camp/medical-camp/
https://college.slmch.ac.in/event/acs-free-medical-camp-at-teachers-house-vellore/
https://www.facebook.com/ACSHospitalChennai/videos/glimpses-of-the-inauguration-of-the-medical-camp-organized-by-acsmch-for-sanitar/531173212776279/
https://college.rrmch.org/news/report-on-breast-feeding-health-education-camp/
https://hospital.rrmch.org/news/awareness-programme-2024/
https://www.instagram.com/p/C5NenpwLW1V/



SDG 4

QUALITY

EDUCATION



4 QUALITY EDUCATION



SDG 4 is the UN's Sustainable Development Goal to ensure inclusive and equitable quality education and promote lifelong learning opportunities for all. Its significance lies in education's foundational role in achieving other goals, as it empowers individuals, drives economic growth, reduces poverty, promotes gender equality, and builds more peaceful and inclusive societies. SDG 4 is the United Nations Sustainable Development Goal for Quality Education, and Dr. M.G.R. Educational and Research Institute (Dr. MGR ERI) actively works to achieve it through educational programs, faculty development, and student initiatives. Dr. MGR ERI collaborates on events like faculty development programs focused on SDG 4, engages students in SDG-related activities, and has even established an SDG Centre.

SDG 4 finds its significance in economic growth, reduction in poverty, gender equality, health and well being, sustainable development and global citizenship. A quality education leads to a more skilled workforce, which is crucial for economic growth and innovation. Education is a powerful tool for breaking the cycle of poverty by enabling individuals to get better jobs and improve their socioeconomic standing. Providing quality education to girls and women breaks cycles of discrimination and violence, allowing them to contribute fully to society. Education is linked to better health outcomes and can reduce inequalities in access to healthcare. Education is essential for developing the knowledge, skills, and values needed to address global challenges like climate change and promote sustainable living. It fosters global citizenship, peace, and tolerance by promoting human rights and a shared understanding of global issues.

Description	Action	Outcome
Economic Growth	The Placement and Training Cell of Dr. M.G.R University was set up with the single goal of helping the student community for getting them placed in Industries according to their skill and ability of the respective student. In the span of twenty five years the Placement	In 2024 more than 7000 students graduated and 81% of them are placed, 10% have opted for higher studies and 07% have chosen to become Entrepreneurs. This is supporting the economic growth of the families connected



	cell has achieved exponential growth and success. The students of our University are working not only in India but also abroad with the first footing got with the assistance of Placement Cell. The Placement and Training Cell with its association with the Department coordinators, constantly involves in suggesting changes in curriculum and syllabus for enhancing the knowledge and skill of students to meet the industry expectations.	to the graduates.
Reduction in poverty	Education is a powerful tool for breaking the cycle of poverty by enabling individuals to get better jobs and improve their socioeconomic standing.	In 2024 more than 7000 students graduated and 81% of them are placed, 10% have opted for higher studies and 07% have chosen to become Entrepreneurs. This is supporting the economic growth and reduction in poverty of the families connected to the graduates.
Gender equality	Providing quality education to girls and women breaks cycles of discrimination and violence, allowing them to contribute fully to society.	The distinctiveness of the university stands in the gender ratio. Nearly 80% of the staff members are women and the student community has a representation of 42% of girls.
Health and Well Being	Quality Education is linked to better health outcomes and can reduce inequalities in access to healthcare.	Among the 7216 graduands, 2185 are healthcare professionals which are a testimony to quality education offered in the health care sector and the community service offered through them. https://slmch.ac.in/2025/medical_camp/medical-camp/
Sustainable Development	The Dr. M.G.R. SDG Centre for International Coordination, aligned with the United Nations Academic Impact (UNAI), has been actively embedding the	https://drmgrdu.ac.in/uploads/QS_TL/SDG.pdf



	<p>United Nations Sustainable Development Goals (UN SDGs) into higher education, research, and community engagement. Through impactful events such as the SDG Debate Programme, SDG Goals Workshop, SPARKLE'24 Symposium, and Interdisciplinary SDG Talks, the Centre has engaged over 3000 students and 500 faculties across engineering, technology, medical sciences, and allied health. These initiatives have fostered critical thinking, innovation, and awareness, linking academic learning with global sustainability priorities.</p>	
Global Citizenship	<p>Dr. M.G.R. Educational and Research Institute, Deemed to be University, is a trendsetter in the sphere of deemed universities for setting high standards of education, exciting opportunities and excellent placement. In order to retain its national image in the educational sphere, the University has commenced an initiative for its students. This enables the students to pursue their course outside the University and also get exposure to intercultural environment.</p> <p>As part of this initiative students are free to choose a minimum of two courses in a foreign university during a semester. It is also mandatory for them to choose a research topic and complete the project report and present the findings to the foreign university. The assessment provided by the foreign faculty will be added to their course credits for the award of the degree.</p> <p>The advantages of this approach are:</p>	<p>https://www.drmgrdu.ac.in/uploads/OIR/Books/ICA_Book_V-IV.pdf</p>



	<ul style="list-style-type: none"> - Opportunity to work in an intercultural environment - Opportunity to work with a faculty in a foreign university - Provides a launch pad for future research - Develop personality, imbibe research and documentation skills 	
--	---	--

Collaborations and events:

Dr. MGR ERI has partnered with other institutions, such as the Tamil Nadu Teachers Education University, to host faculty development programs on topics like strategic planning to enhance teaching and learning to achieve SDG 4.

Student and alumni initiatives:

The institute encourages students and alumni to engage with the SDGs through various activities. For example, an alumnus was recognized as an "SDG AMBASSADOR" for a cycling expedition to raise awareness and funds for organizations fighting human trafficking.

Institutional focus:

Dr. MGR ERI has an official SDG Centre for International Coordination, which unveiled its logo at a UN conference on Climate and SDG Synergies. The university also promotes internal campaigns related to sustainability and the SDGs.

EVIDENCE LINK
https://blog.drmgrdu.ac.in/2024/08/11/see4fit-with-sdg-project/
https://blog.drmgrdu.ac.in/2024/06/23/mgr4undes-sdg-action-project/
https://www.facebook.com/100054391335512/photos/1093460615810306/?_rdr
https://drmgrdu.ac.in/about/international-relation
https://drmgrdu.ac.in/policies
https://law.drmgrdu.ac.in/legal



SDG 5

GENDER

EQUITY



Our university strongly believes that one of the fundamental human rights is gender equity and strives in all aspects to protect gender equity as it is necessary for a peacefully sustainable and a prosperous world. To know the fundamental rights of humans, women, and children right as well as gender justice and gender equality and also duties and the directive principles of all Indian citizens, a compulsory core paper namely “The Indian constitution “ has been offered to all our Engineering students. Detailed knowledge about human values is a mandatory requirement for an engineer to respect fellow humans, analyze the different risk perspectives, and reduce the risk in the working environment. To impart the knowledge of human values to students, a compulsory core paper “Universal Human Values” has been included in our curriculum. By studying an audit course “Disaster management in the Postgraduate level the empathy behavior of our students will be kindled and they will serve the society with a humanitarian mind.

Our Institution undertakes various measures and programs to support and promote the culture of respect, equality for female gender, and to provide opportunities and organizes programs to empower female gender to be financially, mentally and emotionally strong. We organize yearly programs to promote gender equality. The funded projects under the Ministry of Rural Development and MSME, invariably has a 33% quota for women candidates. The University believes that women empowerment and inclusivity of female members in the administration will lead to phenomenal growth and success. Starting from the Vice Chancellor, the ratio of women in the top position amounts to 60% of the total and 80 % of the staffs are female members which is a testament to our commitment to SDG5.

EVIDENCE LINK
https://drmgrdu.ac.in/about/about-university/vice-chancellors-desk/
https://drmgrdu.ac.in/about/officers-of-university/
https://drmgrdu.ac.in/facilities/gender-equity/
https://drmgrdu.ac.in/policies



SDG 6

CLEAN WATER AND SANITATION



Water conservation is vital for achieving all 17 Sustainable Development Goals (SDGs) because water is an essential resource that connects to everything from ending poverty and hunger to mitigating climate change and building sustainable cities. It is not just about having enough water (SDG 6) but about how efficient, fair, and clean our water use is across all sectors of society. In this world which has technologically grown and sophisticated living has become a trend, it takes a toll on the ground water consumption and also availability of clean drinking water is a dream to many. Therefore, we at the University have understood the need to sensitize the stakeholders as well as the general public to wisely use water and to reduce the wastage.

Our educational organization is committed to the responsible management and conservation of water resources. We recognize that water is a precious and limited resource essential for life, learning, and the environment. As such, we pledge to implement effective strategies to reduce water consumption, enhance water efficiency, and promote awareness of water conservation practices.

Awareness and Education: Integrate water conservation education into the curriculum to raise awareness among students and staff about the importance of water conservation and sustainable practices. Organize workshops, seminars, and campaigns that encourage the community to adopt water-saving behaviors.

Water Use Assessment: Conduct regular assessments of water usage across the organization to identify areas for improvement and track progress in water conservation efforts.

Infrastructure Improvements: Invest in water-efficient technologies and infrastructure, including low-flow fixtures, rainwater harvesting systems, and irrigation systems that minimize water waste. Ensure regular maintenance of plumbing and irrigation systems to prevent leaks and water loss.

Behavioral Practices: Encourage all members of the organization to adopt water-saving practices such as turning off taps when not in use, using water-efficient appliances, and reporting leaks or water wastage promptly.

Collaboration and Partnerships: Collaborate with local environmental organizations, government agencies, and community groups to promote water conservation initiatives and share best practices.

Monitoring and Reporting: Establish a system for monitoring water usage and conservation efforts, with regular reporting to stakeholders to ensure transparency and accountability.



Commitment: We are dedicated to fostering a sustainable environment through responsible water management. This policy will be reviewed annually to ensure its effectiveness and to incorporate new strategies for improving our water conservation efforts.

EVIDENCE LINK
https://drmgrdu.ac.in/facilities/water-conservation/
https://drmgrdu.ac.in/facilities/green-campus/
https://drmgrdu.ac.in/uploads/QS/Social_Activities/Environment%20Impact/1%20%20Energy%20conservation.pdf
https://drmgrdu.ac.in/uploads/QS/Social_Activities/Environment%20Impact/2%20%20Water%20conservation.pdf
https://slmch.ac.in/wp-content/uploads/2020/07/CITIZEN_charter.pdf
https://www.instagram.com/p/C-kHJe8sEcP/
https://drmgrdu.ac.in/uploads/QS/TL/SDG.pdf
https://drmgrdu.ac.in/engineering/civil/research/
https://conference.theigen.org/environthon25/2025/index.php
https://drmgrdu.ac.in/policies



SDG 7

AFFORDABLE AND CLEAN ENERGY



Dr. M.G.R. Educational and Research Institute has created an energy conservation and management policy to ensure the responsible and efficient use of energy across all of its facilities. The university is doing this to combat climate change, lower utility costs, and help protect the environment. The key aspects of the policy include:

A commitment to sustainability: The University aims to reduce its environmental impact by promoting eco-friendly practices throughout its campuses.

Focus on energy efficiency: The University seeks to reduce energy waste through implementing better energy management systems, using energy-efficient equipment, and creating awareness about conservation.

Reducing the environmental footprint: Measures are in place to minimize pollution and waste, including the efficient management of solid waste and wastewater

Engaging the university community: The policy is intended to foster a culture of energy consciousness among students, faculty, and staff

Applying to all operations: The policy covers the entire university ecosystem, including academic buildings, administrative offices, hostels, hospitals, and research centers

Dr MGR Educational and Research Institute (ERI) incorporates clean energy through its environmental sustainability research, which includes areas like renewable energy, waste management, and water conservation. The university also has a focus on clean energy technologies such as installing electric vehicle (EV) charging stations on its campuses and promotes a "Green Campus" policy.

Renewable energy research:

Dr MGR ERI's environmental sustainability research includes work on various forms of renewable energy to create a more resilient future. The university's research and innovation focus areas include developing and integrating clean energy solutions and technologies into various sectors.

Green Campus Policy:

The university has a specific Green Campus Policy and aims to document and disseminate successful case studies in sustainable development.



Electric Vehicle (EV) infrastructure:

The institution has been actively installing EV charging stations at its campuses in partnership with other organizations. There is a Relux 30 kW EV charging station located in the main campus. Sustainability at DRMGRERI begins with infrastructure and operational systems. Rooftop solar panels across multiple campuses generate nearly 234,900 kWh annually, directly replacing fossil fuel electricity and reducing 192 tonnes of CO₂ emissions per year. A campus-wide energy efficiency program, including the deployment of LED lighting and BLDC fans, contributes additional annual savings of 68,000 kWh. Together, these measures reduce energy costs, improve efficiency, and make renewable energy central to operations

Through World Water Day, World Bicycle Day, Green Day, Energathon, and EnvironThon, students engage with peers, schools, and local villages, amplifying awareness beyond the campus. For instance, the CYCLE4GREEN initiative saw 120 students reach 500 community members in Tiruvallur, Tiruverkadu, and Kancheepuram villages, spreading awareness on eco-friendly commuting. Similarly, the energy pledge campaign encouraged households to adopt #SaveOneUnitPerDay, extending institutional action into the community. Specialized SDG-focused activities — such as TALK 4 SDG, SDG Pitch Competitions (M360, COP Prix), and global forums — empower students to connect their local sustainability efforts with global climate dialogues. More than 3,000 students participated in Green Day events, while others represented the Institute at international sustainability internships and forums.

Dr. MGR SDG Centre for International Coordination proudly unveiled its Official logo at the UN – Sixth Global Climate and SDG Synergies Conference, held at UN City in Copenhagen, Denmark, in the esteemed presence of Mr. Daniele Violetti (Senior Director, UNFCCC) and Mr. Ralph Wahnschafft (Senior Advisor, UN DESA).

EVIDENCE LINK:
https://drmgrdu.ac.in/facilities/renewable-energy/
https://www.drmgrdu.ac.in/uploads/Facilities/renewable_energy/Solar%20Documents.pdf
https://drmgrdu.ac.in/uploads/QS/Social_Activities/Environment%20Impact/1%20%20Energy%20conservation.pdf
https://www.rrmch.org/cms/wp-content/uploads/2022/03/RRMC_energy_final.pdf
https://drmgrdu.ac.in/uploads/QS/Social_Activities/Environment%20Impact/7%20Green%20audit%20certificate.pdf
https://college.rrmch.org/green-initiatives/
https://drmgrdu.ac.in/uploads/QS/Social_Activities/Environment%20Impact/2%20%20Water%20conservation.pdf
https://www.drmgrdu.ac.in/uploads/MoU/Nat_MoU/231129_Relux%20Electric%20Pvt%20Ltd.pdf
https://drmgrdu.ac.in/uploads/QS/Social_Activities/Environment%20Impact/6%20%20Report%20sustainability.pdf
www.old.drmgrdu.ac.in/news-details.php?newsid=389
https://drmgrdu.ac.in/activities/ensav-club/
https://drmgrdu.ac.in/policies



SDG 8

DECENT WORK AND ECONOMIC GROWTH



SDG 8 is significant because it promotes sustained, inclusive economic growth, full employment, and decent work for all, which is crucial for poverty reduction and human development. Its significance lies in creating quality jobs, ensuring fair wages and safe working conditions, and fostering innovation and entrepreneurship. By addressing inequality and promoting inclusive growth, SDG 8 helps to reduce poverty and build more prosperous, resilient communities. We at Dr. M.G. R. Educational and Research Institute, we facilitate to our stakeholders various opportunities to improve theory economic positioning through decent placements.

Placement Cell:

The Placement and Training Cell of Dr. M.G.R University was set up with the single goal of helping the student community for getting them placed in Industries according to their skill and ability of the respective student. In the span of twenty five years the Placement cell has achieved exponential growth and success. In 2024 more than 7000 students graduated and 81% of them are placed, 10% have opted for higher studies and 07% have chosen to become Entrepreneurs. This is supporting the economic growth of the families connected to the graduates.

Industry Institute Planning Cell:

Dr. M. G. R. Educational and Research Institute – Department of Placement and Training have a very strong engagement with industry partners. A large number of companies from across diverse set of industries hire graduates from different programs. Various trainings facilitating employment are conducted and from the campus employer presence it is evident that we are committed towards the decent work and economic growth.

Career Guidance Cell:

A dedicated Career Guidance Cell is established to guide the students to prospective careers. This cell is to collect the career options from the students, create Awareness and importance of higher studies in India & abroad. The cell functions like a bridge between the institution and industry. It holds career-oriented lectures by senior managers and successful consultants.



Faculty Development Programs:

Academic Staff Colleges (ASC) were established in Dr MGR Educational and Research Institute (Deemed to be University) for organizing Faculty Development program. The main objective of Academic Staff Colleges is to provide adequate opportunities for the professional development of Faculties. In 2024, out of 2186 faculty members, 1254 have completed 02 FDPs for their career advancement. New faculty members are given induction training during their joining.

Research Reward Policy:

Dr. M.G.R. Educational and Research Institute (deemed university) has a research reward policy called the Sir C.V. Raman Club Research Award policy. This policy recognizes faculty and research students for achievements in publications, citations (h-index), funded projects, and patents. The goal is to motivate research and ensure faculty score marks in their performance appraisals, which are linked to the UGC 2018 guidelines.

Promotion Policy and Welfare Measures:

The Performance appraisal provides an annual written review of individual performance, in the context of the ongoing performance appraisal process. It is designed to facilitate constructive discussion between the employee and employee/supervisor in order to clarify performance objectives, provide feedback about the employee’s performance with respect to skills and behavior, provide a framework for identifying employee career advancement and opportunities and to serve as a basis for arriving at decisions objectively. Supervisors are responsible for completing the annual performance self appraisal of the employees under them, as part of the performance appraisal process.

The Institution has effective welfare measures for Teaching and Non-teaching staff in place to achieve Institutional progress through human capital, which is healthy, motivated and committed. For successful sustainability of an effective human capital, our institution has the best practices of implementing various welfare schemes for the employees as a whole, to build a strong bond of relationship between employees and management.

EVIDENCE LINK:
https://drmgrdu.ac.in/about/regulations/policies/
https://drmgrdu.ac.in/placement/industry-collaborations-training/
//www.old.drmgrdu.ac.in/uploads/ResearchPolicy/Research%20Promotion%20Policy.pdf
https://drmgrdu.ac.in/placement/
https://drmgrdu.ac.in/activities/academic-staff-college/
https://drmgrdu.ac.in/activities/industry-institute-planning-cell-iipc/
https://drmgrdu.ac.in/activities/career-guidance-cell



SDG 9

INNOVATION

AND

ENTREPRENEURSHIP



Sustainability at DRMGRERI begins with infrastructure and operational systems. Rooftop solar panels across multiple campuses generate nearly 234,900 kWh annually, directly replacing fossil fuel electricity and reducing 192 tonnes of CO₂ emissions per year. A campus-wide energy efficiency program, including the deployment of LED lighting and BLDC fans, contributes additional annual savings of 68,000 kWh. Together, these measures reduce energy costs, improve efficiency, and make renewable energy central to operations. We have an energy efficient building renovation policy which monitors the commitment towards SDG9.

Wastewater and liquid waste management are equally robust. With 200,000 liters/day sewage treatment plants, DRMGRERI ensures 100% of wastewater is treated and reused for flushing, cooling, and landscaping, saving 60 million liters of freshwater annually. Sludge is converted into organic compost, supporting a green campus. Hazardous effluents and biomedical waste are managed in compliance with CPCB and TNPCB norms, ensuring zero untreated discharge.

Dr. M.G.R. Educational and Research Institute has a new B.Tech in Electric Vehicles specialization under its Electrical and Electronics Engineering (EEE) department, offered in collaboration with Tata Technologies. This program aims to bridge the gap between academia and industry through hands-on training, internships, and project-based learning. A B.Tech in Electric Vehicle (EV) Technologies directly contributes to Sustainable Development Goal (SDG) 9 by promoting resilient infrastructure, fostering sustainable industrialization, and stimulating technological innovation. The curriculum prepares engineers to address the challenges and opportunities of the transition to electric mobility.

Not only that, the development of a widespread EV charging network is key to enabling a shift to a more sustainable transportation system. EV charging stations support SDG 9 by building resilient and sustainable infrastructure and promoting sustainable industrialization. There is a Relux 30 kW EV charging station located in the main campus.

Dr. MGR ERI ensures that faculty working on interdisciplinary research has access to cutting-edge laboratories, equipment, and research centers. The centers of excellence for fields



such as IoT, Artificial Intelligence, Biotechnology, and Environmental Sustainability provide facilities and tools that support collaborative work between departments. These resources are crucial for conducting high-quality research across various disciplines. Dr. MGR ERI ensures that faculty working on interdisciplinary research has access to cutting-edge laboratories, equipment, and research centers. The centers of excellence for fields such as IoT, Artificial Intelligence, Biotechnology, and Environmental Sustainability provide facilities and tools that support collaborative work between departments. These resources are crucial for conducting high-quality research across various disciplines.

Divesting Policy:

Divestment from Carbon-Intensive Energy Industries: Dr. M. G. R. Educational and Research Institute will divest its investments from carbon-intensive energy industries, with a particular focus on coal and oil. The university will actively seek to reduce its exposure to companies involved in the extraction, production, or distribution of fossil fuels.

- Integrating Green Infrastructure and Operations
- People-Centric Climate Action and SDG Advocacy
- Mobility Shift and Carbon Savings
- Research, Innovation, and Knowledge Creation
- Sustainable landscaping
- Promote sustainable procurement

EVIDENCE LINK:
https://drmgrdu.ac.in/policies
https://drmgrdu.ac.in/facilities
https://drmgrdu.ac.in/facilities/renewable-energy/
https://drmgrdu.ac.in/facilities/renewable-energy/
https://drmgrdu.ac.in/uploads/QS/Social_Activities/Environment%20Impact/6%20%20Report%20sustainability.pdf
https://drmgrdu.ac.in/uploads/QS/Social_Activities/Environment%20Impact/5%20%20%20Liquid%20%20waste.pdf
https://drmgrdu.ac.in/uploads/QS/Social_Activities/Environment%20Impact/4%20%20Solid%20%20Waste.pdf
https://drmgrdu.ac.in/uploads/QS/Social_Activities/Environment%20Impact/3%20%20Eco%20friendly%20Transportation.pdf
https://drmgrdu.ac.in/uploads/QS/Social_Activities/Environment%20Impact/2%20%20Water%20conservation.pdf
https://blog.drmgrdu.ac.in/tag/electric-vehicle/
https://www.drmgrdu.ac.in/uploads/MoU/Nat_MoU/231129_Relux%20Electric%20Pvt%20Ltd.pdf
https://drmgrdu.ac.in/innovation-and-entrepreneurship/



SDG 10

REDUCED

INEQUALITIES

Dr MGR



SDG 10, "Reduced Inequalities," means creating a world where everyone has a fair chance, no matter where they live or who they are. This involves shrinking the gaps in income, opportunity, and access to resources, while fighting discrimination based on age, sex, race, and other factors. Ultimately, it's about ensuring social and economic fairness to build more stable and prosperous societies for all. Extension activity is a teaching approach which enables the learners to involve themselves extensively with the society or community in which opportunities are created by the educational institution to sensitize learners to social issues and facilitate holistic development in line with SDG 10. It also helps to impart universal human values in practice to learners which in turn cumulatively adds on to the growth of the society and the Institution on the whole. The distinctiveness of the university stands in the gender ratio. Nearly 80% of the staff members are women and the student community has a representation of 42% of girls. To ensure the effective reduction in inequalities the following initiatives were taken.

Initiatives taken:

- Free Medical Camps
- Free Job fairs
- Water conservation awareness
- Rice bag distribution
- Free education services to the needy
- Scholarships

The impact of the Medical Camp extends beyond immediate health benefits. Beneficiaries received critical medical attention and guidance, reducing the financial and logistical burden of accessing healthcare. Economically, families were able to redirect limited resources to other essential needs such as education and household sustenance. Socially, the initiative fostered community cohesion, trust, and a sense of inclusion, as residents felt valued and supported. Many beneficiaries expressed profound gratitude for the initiative, highlighting that the camp not only addressed health needs but also provided reassurance, dignity, and



hope for a healthier future. The Medical Camps 2024 exemplifies Dr. MGR Educational and Research Institute's commitment to holistic community development and social responsibility. By providing essential healthcare services, promoting preventive health awareness, and supporting vulnerable families, the University demonstrates how higher education institutions can serve as catalysts for meaningful social change.

Dr. MGR Educational and Research Institute was awarded this certificate for being ranked second in the National Sustainability Impact Institution's Ranking (NSIIR) in the "Top 5 Institutions" category. The award recognizes the institution's "exceptional commitment to sustainability, environmental responsibility, and social impact". A top national ranking for sustainability sets a powerful example for other institutions to follow in social and environmental responsibility. It drives tangible actions that benefit the community through green initiatives and social outreach.

EVIDENCE LINK:
https://slmch.ac.in/2025/medical_camp/medical-camp/
https://college.slmch.ac.in/event/acs-free-medical-camp-at-teachers-house-vellore/
https://www.facebook.com/ACSHospitalChennai/videos/glimpses-of-the-inauguration-of-the-medical-camp-organized-by-acsmch-for-sanitar/531173212776279/
https://college.rrmch.org/news/report-on-breast-feeding-health-education-camp/
https://hospital.rrmch.org/news/awareness-programme-2024/
https://drmgrdu.ac.in/uploads/QS/Social_Activities/Recognition/7.%20Award%20-%20IGEN%20GREEN%20DAY%20Award%202023%20-Platinum%20Category.pdf
https://www.facebook.com/ACSMPVELLORE/videos/acs-mega-job-fair-at-vaniyambadi/924936389189307/
https://hospital.slmch.ac.in/event/rice-distribution-for-chairpersons-birthday/
https://blog.drmgrdu.ac.in/2024/08/11/see4fit-with-sdg-project/
https://drmgrdu.ac.in/about/officers-of-university/



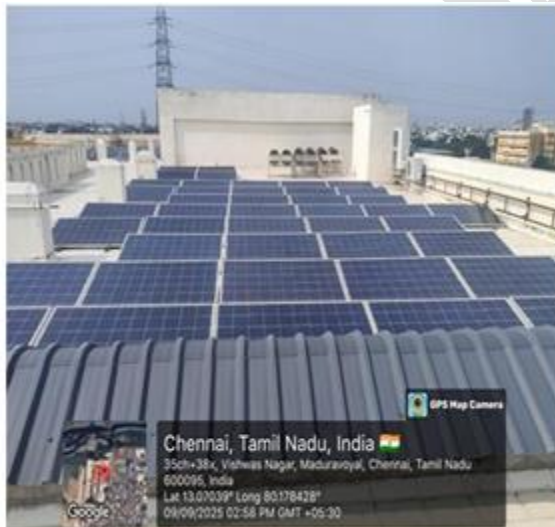
SDG 11

SUSTAINABLE CITIES AND COMMUNITIES



Smart and sustainable cities are gaining priority to promote sophisticated living for the common man and inclusivity to the poor. The need for using clean and affordable energy, clean transport, environmental friendly building material, recycling of waste has taken good shape wherein the University has been a fore-runner.

The recent initiative is the institution's recent involvement in cycling initiatives and events that promote environmental awareness, health, and sustainable development. These include the creation of the MGR IGEN CYCLE4GREEN CLUB and the recognition of an alumnus for an intercontinental bicycle journey. Launched in May 2024, this club involves students in promoting environmental awareness and sustainability through cycling. The institution supported Prof. Jayant Mahajan's 20,000 km cycling journey across India's borders to raise awareness about climate change. The institute recognized alumnus Er. Naresh Kumar as an "Alumni SDG Ambassador" for his significant contributions to the United Nations Sustainable Development Goals (SDGs) through his cycling expeditions.



The University organizes various events in which various participants are given access to the campus and a major highlight is the junior competitions wherein school students



participate. The symposium featured a variety of technical and creative events, providing a platform for students from different academic backgrounds to showcase their abilities. Techastra '24 was the 16th National Level Technical Symposium organized by the Department of Computer Science & Engineering at Dr. M.G.R. Educational and Research Institute in Chennai. The symposium took place on September 2nd and 3rd, 2024, at the university's main campus. National space day was also celebrated and the local community schools participated and benefitted. The event aimed to enrich participants' technical skills and facilitate connections with academicians, professionals, and industry experts.

RajaRajeswari Medical College and Hospital has a sprawling cricket ground which is at par with any cricket ground where national cricket matches are played. The management of RajaRajeswari Medical College and Hospital has entered into a Memorandum of Understanding with KSCA (Karnataka State Cricket Association) to host zonal under 16 and 18 matches as well as club tournaments. Various matches are played round the year thus giving an opportunity for the aspiring sports players and the enthusiasts. Work is in full progress to build a pavilion to accommodate the spectators. Many International Cricket teams like Australian Cricket Team under 19 and Srilankan Cricket Team representing under 14 have played in the cricket grounds adding feather to the cap. A club House is being built to complete the set up thus making the cricket ground at RajaRajeswari medical College and Hospital one of the best cricket grounds in the country.





Not only that, the development of a widespread EV charging network is key to enabling a shift to a more sustainable transportation system. EV charging stations support SDG 9 by building resilient and sustainable infrastructure and promoting sustainable industrialization. There is a Relux 30 kW EV charging station located in the main campus.

EVIDENCE LINK:

https://www.google.com/search?sca_esv=e54914a596765dca&q=techastra+2024+mgr+eri&source=Inms&fbs=AlljpHxU7SXXniUZfeShr2fp4giZ1Y6MJ25_tmWITc7uy4KleqDdErwP5rACeJAty2zADJgKwqE9vE8G6XUjedIRSWZu1w-EyDQqzBO-FgE4jMyjIF3t3kgHw3S0knSBEzsv3daP0E-U63Bx36RNHHv_Y0d9DpYgd6c65Z-eZgqv1ZQJ627AoN8kbtHb

<https://www.facebook.com/MGRUniversityDeemed/videos/glimpses-of-the-national-space-day-2024-celebration-at-mgreri-organized-by-the-d/1772553019946046/>

<https://www.facebook.com/ADMD11/videos/dr-mgr-eri-alumni-nareshs-intercontinental-tandem-bike-ride/454393441972931/>

https://www.linkedin.com/posts/dr-mgr-educational-and-research-institute_mgreri-earthday-earth-activity-7193593120482025473-UaMC/

<https://college.rmmch.org/game-for-more/>

<https://drmgrdu.ac.in/facilities/green-campus/>

<https://drmgrdu.ac.in/facilities/renewable-energy/>

<https://drmgrdu.ac.in/policies>



SDG 12

RESPONSIBLE CONSUMPTION AND PRODUCTION





The SDG 12 aims to reduce the use of natural resources and toxic materials, minimized the generation of waste and pollutants, promote resources and energy efficiency, provide access to basic services, green jobs, better quality of life, reduce future economic, environmental and social costs, strengthen economic competitiveness and reduce poverty.

Sustainability at DRMGRERI begins with infrastructure and operational systems. Rooftop solar panels across multiple campuses generate nearly 234,900 kWh annually, directly replacing fossil fuel electricity and reducing 192 tonnes of CO₂ emissions per year. A campus-wide energy efficiency program, including the deployment of LED lighting and BLDC fans, contributes additional annual savings of 68,000 kWh. Together, these measures reduce energy costs, improve efficiency, and make renewable energy central to operations.

Wastewater and liquid waste management are equally robust. With 200,000 liters/day sewage treatment plants, DRMGRERI ensures 100% of wastewater is treated and reused for flushing, cooling, and landscaping, saving 60 million liters of freshwater annually. Sludge is converted into organic compost, supporting a green campus. Hazardous effluents and biomedical waste are managed in compliance with CPCB and TNPCB norms, ensuring zero untreated discharge. On the solid and e-waste front, composting pits and biogas plants convert organic waste into usable energy and manure. Annual collection drives manage over 100 kg of e-waste, while student pledges ensure responsible disposal. By approaching waste as a resource, the Institute demonstrates circular economy principles in action.

Transportation is a major contributor to emissions, and DRMGRERI has pioneered a mobility shift. With two EV charging stations (60 kW and 120 kW), the University supports a growing electric fleet: 4 EV buses, 5 EV cars, 10 EV autos, and 4 EV buggies.

Initiatives taken:

Waste Management: MGRERI has a multi-level, systematic waste management policy.

- Segregation: The campus uses color-coded bins to segregate waste.
- Plastic Ban: Single-use plastics are banned on campus, with reusable steel utensils used in the canteen to minimize waste.



- Recycling and Reuse: The University recycles solid waste like paper and metal scraps and reuses construction debris.
- Composting: A vermi composting yard turns biodegradable organic waste into bio-fertilizer for the campus grounds.
- E-waste: The institute follows eco-friendly methods for disposing of electronic waste and has a contract with an approved e-waste management facility.

Water Management: The institute's policies emphasize conservation and recycling.

- Liquid Waste: Multiple sewage treatment plants (STPs) on campus treat wastewater, which is then reused for gardening.
- Water Harvesting: A rainwater harvesting system is in place to replenish the groundwater table.

Green Campus Initiatives: MGRERI integrates broader sustainability goals into its campus infrastructure.

- Automobile Restrictions: The use of private vehicles on campus is restricted to manage air and noise pollution.
- Green Cover: The University works to increase the campus's green cover by planting more trees.

Awareness and Education: The University uses education to foster a culture of sustainability among its community.

- SDG Club: Student-led SDG clubs promote the United Nations' sustainability goals through campaigns and activities.
- Workshops and Audits: The institute conducts regular environmental audits and training programs to raise awareness about sustainability and track its progress.

MGRERI conducts research in environmental sustainability, covering areas like waste management, water conservation, and renewable energy. The University is recognized for its commitment in promoting sustainable living, responsible consumption and energy responsibility.

EVIDENCE LINK:

<https://drmgrdu.ac.in/policies>

<https://drmgrdu.ac.in/uploads/QS/TL/SDG.pdf>

<https://drmgrdu.ac.in/engineering/civil/research/>

<https://www.facebook.com/ACSArunKumar/posts/congratulations-to-dr-l-ramesh-joint-registrar-of-dr-mgr-university-on-receiving/1242851251190991/>

https://drmgrdu.ac.in/uploads/QS/Social_Activities/Environment%20Impact/7%20Green%20audit%20Certificate.pdf



SDG 13

CLIMATE

ACTION

Dr MGR



Dr. M.G.R. Educational and Research Institute (ERI) actively work toward carbon emission reduction through its comprehensive Green and Smart Campus Policy. The policy focuses on achieving zero waste, conserving resources, and managing energy efficiently to meet sustainability goals. The Dr. M. G. R. Educational and Research Institute is committed towards the SDG 13 which is closely aligned with SDG 7, SDG 11, SDG 14 and SDG 15. Various Institutional Social Responsibilities like, Energy Conservation, Water Conservation, Pollution control, Disaster Management, Energy Audit, Recycle and Reuse etc are being used to vibrantly address the climate change issue. The curriculum and Syllabus is tailor made to include the responsibility of the stakeholder in saving the environment for a better future.

Divestment from Carbon-Intensive Energy Industries: Dr. M. G. R. Educational and Research Institute will divest its investments from carbon-intensive energy industries, with a particular focus on coal and oil. The university will actively seek to reduce its exposure to companies involved in the extraction, production, or distribution of fossil fuels.

- Integrating Green Infrastructure and Operations
- People-Centric Climate Action and SDG Advocacy
- Mobility Shift and Carbon Savings
- Research, Innovation, and Knowledge Creation
- Sustainable landscaping
- Promote sustainable procurement

Green Campus Policy:

The university has a specific Green Campus Policy and aims to document and disseminate successful case studies in sustainable development.

Electric Vehicle (EV) infrastructure:

The institution has been actively installing EV charging stations at its campuses in partnership with other organizations. There is a Relux 30 kW EV charging station located in the main campus. Sustainability at DRMGREI begins with infrastructure and operational systems.



Rooftop solar panels across multiple campuses generate nearly 234,900 kWh annually, directly replacing fossil fuel electricity and reducing 192 tonnes of CO₂ emissions per year. A campus-wide energy efficiency program, including the deployment of LED lighting and BLDC fans, contributes additional annual savings of 68,000 kWh. Together, these measures reduce energy costs, improve efficiency, and make renewable energy central to operations. The Innovation and Entrepreneurship cell also supports startups focused on high-impact sectors like electric mobility and deep technology, which contributes to the broader development of sustainable solutions.



The university's policies emphasize systematic waste management, including the segregation, collection, and recycling of waste. Single-use plastics are banned on campus, and organic waste is converted into bio-fertilizer through a vermin composting yard. Liquid waste is treated using a Sewage Treatment Plant (STP) with an 1100 KLD capacity. The treated water is then reused for landscaping and other purposes. To address the issue of electronic waste, the institute follows eco-friendly disposal mechanisms, including the resale of obsolete equipment and contracts with authorized e-waste management facilities. To manage air and noise pollution, the campus has a clear parking policy that restricts four-wheelers. Many students and



staff use college transport or public transportation. The use of tobacco and the burning of waste are strictly prohibited to maintain clean air on campus. The Institute practices rainwater harvesting by directing water into designated recharge pits and bore wells to replenish the groundwater table. This initiative helps address water scarcity, particularly during the summer months.

EVIDENCE LINK:
https://www.rrmch.org/cms/wp-content/uploads/2022/03/RRMC_energy_final.pdf
https://drmgrdu.ac.in/uploads/QS/Social_Activities/Environment%20Impact/7%20Green%20audit%20certificate.pdf
https://college.rrmch.org/green-initiatives/
https://drmgrdu.ac.in/activities/ensav-club/
https://drmgrdu.ac.in/facilities/renewable-energy/
https://www.drmgrdu.ac.in/uploads/Facilities/renewable_energy/Solar%20Documents.pdf
https://drmgrdu.ac.in/policies
https://drmgrdu.ac.in/innovation-and-entrepreneurship/



SDG 14

LIFE BELOW

WATER

Dr MGR



Nearly 70% of the earth is covered by water and hence it calls for an action plan to support and sustain the life below water. Marine life forms the livelihood of many fishing hamlets; however eutrophication and excessive fishing are some of the problems which need to be addressed. To enhance the life below water, the Dr. APJ Abdul Kalam Centre for Innovation and Entrepreneurship has developed simple gadgets to remove the unwanted plant life on the surface of water and to remove floating waste which is a major threat to the aquatic life.

The Centre for Innovation and Entrepreneurship Development (CIED) at Dr. M.G.R. Educational and Research Institute, established to nurture a culture of innovation and startup development, plays a pivotal role in supporting student and faculty entrepreneurs through state-of-the-art infrastructure, mentorship, and funding opportunities. CIED's mission is to build a vibrant entrepreneurial ecosystem that enables the journey from ideation to impactful product development.

Complementing this initiative, the Innovation and Startup Promotion Cell (ISPC) at Dr. M.G.R. ERI serves as a catalyst for early-stage innovation and startup growth. Functioning as a non-profit entity, ISPC runs a range of structured programs in pre-incubation, incubation, and acceleration, with a focus on high-impact sectors like Defense, Electric Mobility, Healthcare, and Deep Technology. Together, CIED and ISPC empower aspiring entrepreneurs, guiding them through every phase of the startup lifecycle — from idea validation to market launch — and contribute to the vision of a self-reliant and innovation-driven India. The University also has a dedicated Research facility which focuses on Remote Sensing and Satellite Oceanography, Hydrology and Water Resources Management.

EVIDENCE LINK:

<https://drmgrdu.ac.in/innovation-and-entrepreneurship/>

<https://www.facebook.com/ACSArunKumar/posts/congratulations-to-our-bright-minds-from-akc-dr-mgr-eri-startupser-r-logeshwaran/1143122271163890/>

https://www.linkedin.com/posts/akcoe_akc-dr-mgr-eri-proud-to-witness-young-minds-activity-7165224149626408961-IM4r/

<https://drmgrdu.ac.in/engineering/civil/research/>



SDG 15

LIFE ON

LAND

Dr MGR



The SDG 15 is defined by the UN to protect, restore and promote sustainable use of terrestrial ecosystems, sustainably manage forests, combat desertification and halt and reverse land degradation and also biodiversity loss. Human beings are fully dependent on the land for a living and it becomes a mandate to promote SDG 15. To ensure a sustainable living, sensitization programs are conducted to avoid pollution by plastic, dumping e-waste etc. Courses are inbuilt in the curriculum to create awareness among the learners to save the earth for the generations to come and also for the betterment of our own living.

Wastewater and liquid waste management are equally robust. With 200,000 liters/day sewage treatment plants, DRMGRERI ensures 100% of wastewater is treated and reused for flushing, cooling, and landscaping, saving 60 million liters of freshwater annually. Sludge is converted into organic compost, supporting a green campus. Hazardous effluents and biomedical waste are managed in compliance with CPCB and TNPCB norms, ensuring zero untreated discharge. On the solid and e-waste front, composting pits and biogas plants convert organic waste into usable energy and manure. Annual collection drives manage over 100 kg of e-waste, while student pledges ensure responsible disposal. By approaching waste as a resource, the Institute demonstrates circular economy principles in action.

Transportation is a major contributor to emissions, and DRMGRERI has pioneered a mobility shift. With two EV charging stations (60 kW and 120 kW), the University supports a growing electric fleet: 4 EV buses, 5 EV cars, 10 EV autos, and 4 EV buggies.

Initiatives taken:

Waste Management: MGRERI has a multi-level, systematic waste management policy.

- Segregation: The campus uses color-coded bins to segregate waste.
- Plastic Ban: Single-use plastics are banned on campus, with reusable steel utensils used in the canteen to minimize waste.
- Recycling and Reuse: The University recycles solid waste like paper and metal scraps and reuses construction debris.
- Composting: A vermi composting yard turns biodegradable organic waste into bio-fertilizer for the campus grounds.



- E-waste: The institute follows eco-friendly methods for disposing of electronic waste and has a contract with an approved e-waste management facility.

Water Management: The institute's policies emphasize conservation and recycling.

- Liquid Waste: Multiple sewage treatment plants (STPs) on campus treat wastewater, which is then reused for gardening.
- Water Harvesting: A rainwater harvesting system is in place to replenish the groundwater table.

Green Campus Initiatives: MGRERI integrates broader sustainability goals into its campus infrastructure.

- Automobile Restrictions: The use of private vehicles on campus is restricted to manage air and noise pollution.
- Green Cover: The University works to increase the campus's green cover by planting more trees.

Awareness and Education: The University uses education to foster a culture of sustainability among its community.

- SDG Club: Student-led SDG clubs promote the United Nations' sustainability goals through campaigns and activities.
- Workshops and Audits: The institute conducts regular environmental audits and training programs to raise awareness about sustainability and track its progress.

EVIDENCE LINK:
https://drmgrdu.ac.in/policies
https://drmgrdu.ac.in/uploads/QS/TL/SDG.pdf
https://drmgrdu.ac.in/engineering/civil/research/
https://www.facebook.com/ACSArunKumar/posts/congratulations-to-dr-l-ramesh-joint-registrar-of-dr-mgr-university-on-receiving/1242851251190991/
https://drmgrdu.ac.in/uploads/QS/Social_Activities/Environment%20Impact/7%20Green%20audit%20certificate.pdf



SDG 16

PEACE, JUSTICE AND STRONG INSTITUTIONS



16 PEACE, JUSTICE
AND STRONG
INSTITUTIONS



The University has a vision and unwavering dedication to bring in upliftment to all sections of the society through education, skill training and empowerment and pushing ahead the sustainable Development Goal 4 which focuses on affordable and quality education for all, facilitating a united platform for all sections of the society at large, thereby upholding unity in diversity. Education is the key catalyst in promoting National unity, as it can help citizens of the nation to appreciate the diversity and uniqueness of their country and to participate in its democratic and developmental processes, as put forth by the Ministry of Education. The University is instrumental in promoting harmony and contributing to the Nation's progress and also addresses social inequalities, hence establishing peace, justice and strong Institutions as defined by UN-SDG 16.

The University governance ensures the participation of all its stakeholders in decision making irrespective of gender thereby practicing peace and justice for all. Apart from this, we also have the Faculty of law which organizes free legal aid programs and various outreach programs to ensure justice. The highlights of the programme included, the opening ceremony of the Free Legal Aid Camp by our Honourable Founder Chancellor, the release of a Tamil book titled Fundamental Rights to Every Citizen as His Right, which was distributed to the participants of the programme, the release of Counseling Form for the Free Legal Aid Camp shared with legal aid seekers, more than 100 people actively participated in the camp and availed themselves of legal advice provided by our dedicated faculty members, making the event a grand success.

The Faculty of Law offers Undergraduate programmes in law as per the guidelines of the Bar Council of India and the University Grants Commission. The university has devised a pragmatic curriculum which is beneficial for the students to take up practice after the completion of the degree.

We also have a free legal aid cell which provides free legal services to the poor and marginalized to ensure equal access to justice. Its significance lies in offering legal advice, representation in court, and help with legal procedures to those who cannot afford a lawyer,



thereby upholding the principle of justice for all and bridging the gap between law and society. These cells also contribute to legal awareness and social justice education.

EVIDENCE LINK:

https://law.drmgrdu.ac.in/

https://law.drmgrdu.ac.in/legal

https://drmgrdu.ac.in/uploads/QS/Govern_Stru/Ethics%20Committee/index.html

https://drmgrdu.ac.in/uploads/QS/Govern_Stru/Com_Rep/COD_Stu/index.html

https://drmgrdu.ac.in/uploads/QS/Govern_Stru/Com_Rep/COD_Faculty/index.html

https://drmgrdu.ac.in/uploads/QS/Govern_Stru/Com_Rep/COD_NT/index.html

https://drmgrdu.ac.in/uploads/QS/Govern_Stru/Com_Rep/AR/index.html



SDG 17

PARTNERSHIPS

FOR THE

GOALS



17 PARTNERSHIPS FOR THE GOALS



The vision of impacting the sustainable Development Goals, calls in for a collective responsibility shared between the University, Government Agencies, Private players and the NGOs. The National priorities and mission play a vital role in achieving the various sustainable Development Goals. Projects of National importance are to be strengthened and the methodology to achieve the desired outcomes, wherein the benefits reach the right person standing last in the queue is mandatory. Regular monitoring and audit mechanism and a rigid evaluation framework along with skilled and passionate employees at all ends are required to accomplish the goals. The University has partnered with various Government, Non-Government, Private sector and NGOs to ensure the successful implementation of sustainable development goals (both National and International).

The university utilizes collaborations to integrate sustainability into its core mission and extend its impact beyond the campus:

International cooperation: The institute has an International Relations division that facilitates student exchange programs with foreign universities. This initiative exposes students to intercultural environments and fosters global partnerships for sustainable development.

United Nations engagement: Dr. M.G.R. ERI's SDG Centre for International Coordination unveiled its logo at the UN's Sixth Global Climate and SDG Synergies Conference in Copenhagen. This demonstrates the university's commitment to and alignment with global sustainable development efforts.

Industry and government collaboration: The university partners with various sectors to translate research into real-world applications. Its partnerships with industry leaders and government agencies ensure that its research is relevant, scalable, and impactful.

Interdisciplinary collaboration: The institute fosters an interdisciplinary research ecosystem that encourages collaboration among faculty, students, and external partners. This approach promotes the sharing of expertise to tackle complex, multi-faceted problems, a core principle of SDG 17.



EVIDENCE LINK:

<https://drmgrdu.ac.in/about/memorandum-of-understandingmou/>

<https://drmgrdu.ac.in/placement/industry-collaborations-training/>

<https://drmgrdu.ac.in/activities/national-cadet-corps-ncc/>

<https://drmgrdu.ac.in/activities/national-service-scheme-nss/>

<https://www.drmgrdu.ac.in/>

Ranking & Accreditation

NAAC 'A+' | ABET | UGC Approved | AICTE Accreditation | MCI Approved | NABH Approved

